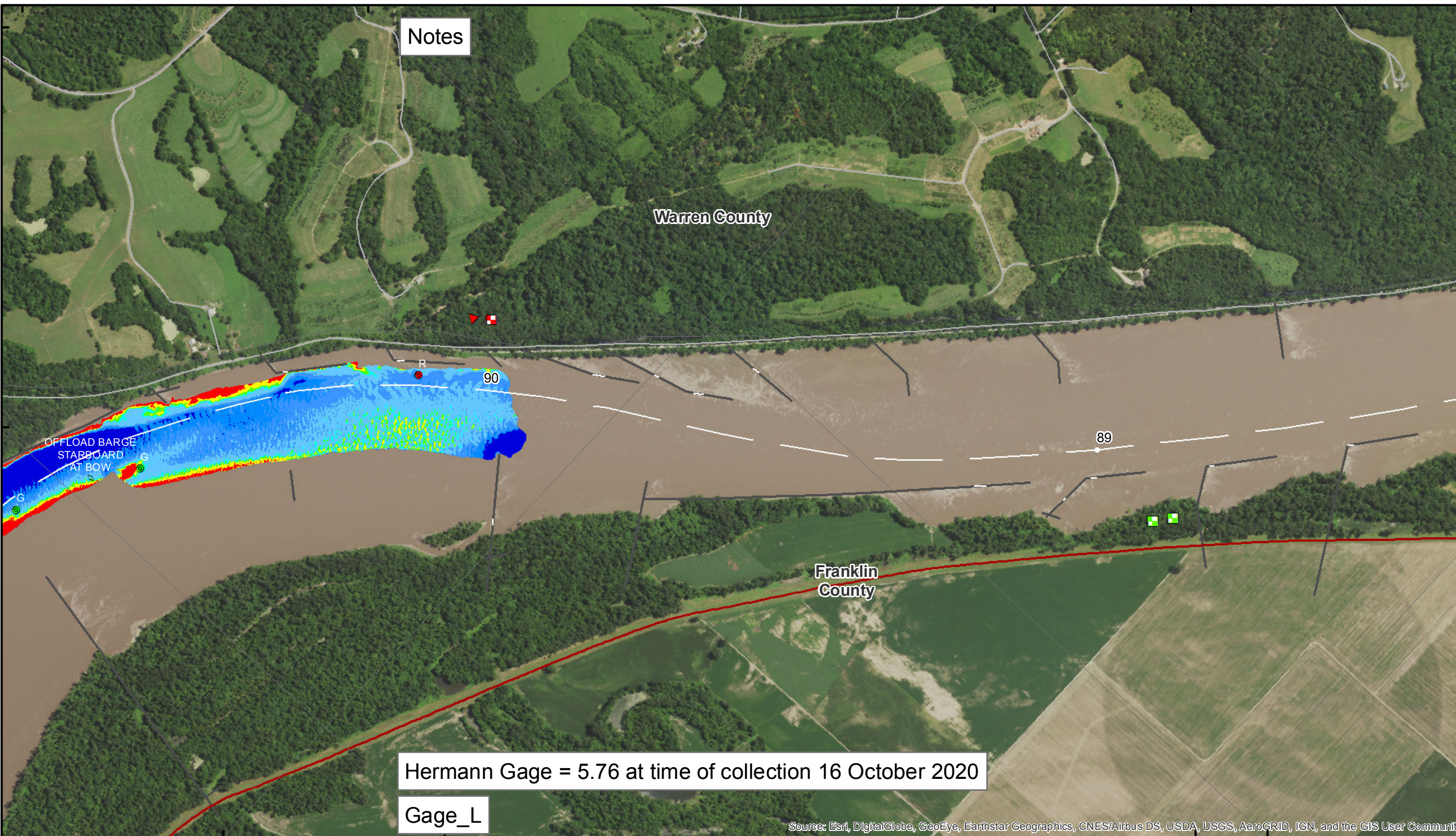


38°43'N 91°18'W 38°41'N 91°17'W



Notes

Hermann Gage = 5.76 at time of collection 16 October 2020

Gage_L

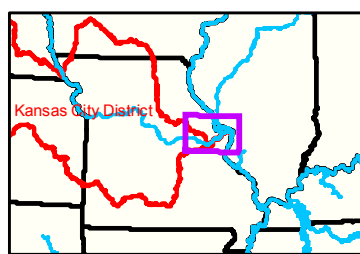
Source: Esri, DigitalGlobe, GeoEye, Earthstar Geographics, CNES/Airbus DS, USDA, USGS, AeroGRID, IGN, and the GIS User Community



DISCLAIMER: The U.S. Army Corps of Engineers provides this information as a service to the public. It is not intended to be used for any purpose other than that for which it was prepared. The Corps makes no warranty, express or implied, regarding the accuracy, reliability, or completeness of the information. The information is provided as is, without any representation or warranty of any kind. The user assumes all liability for any use of the information. The U.S. Army Corps of Engineers is not responsible for any errors or omissions in this information. The information is provided for informational purposes only. The information is not to be used for any purpose other than that for which it was prepared. The Corps makes no warranty, express or implied, regarding the accuracy, reliability, or completeness of the information. The information is provided as is, without any representation or warranty of any kind. The user assumes all liability for any use of the information. The U.S. Army Corps of Engineers is not responsible for any errors or omissions in this information. The information is provided for informational purposes only.

KANSAS CITY DISTRICT MISSOURI RIVER AREA OFFICE	
Submitted By:	MRAO
Reviewed By:	MRAO
Approved By:	MRAO

Survey Information
 MO_01_LMR
 MO_01_LMRX_20201016_CS_90_5_92_0_SORT
 16 October 2020



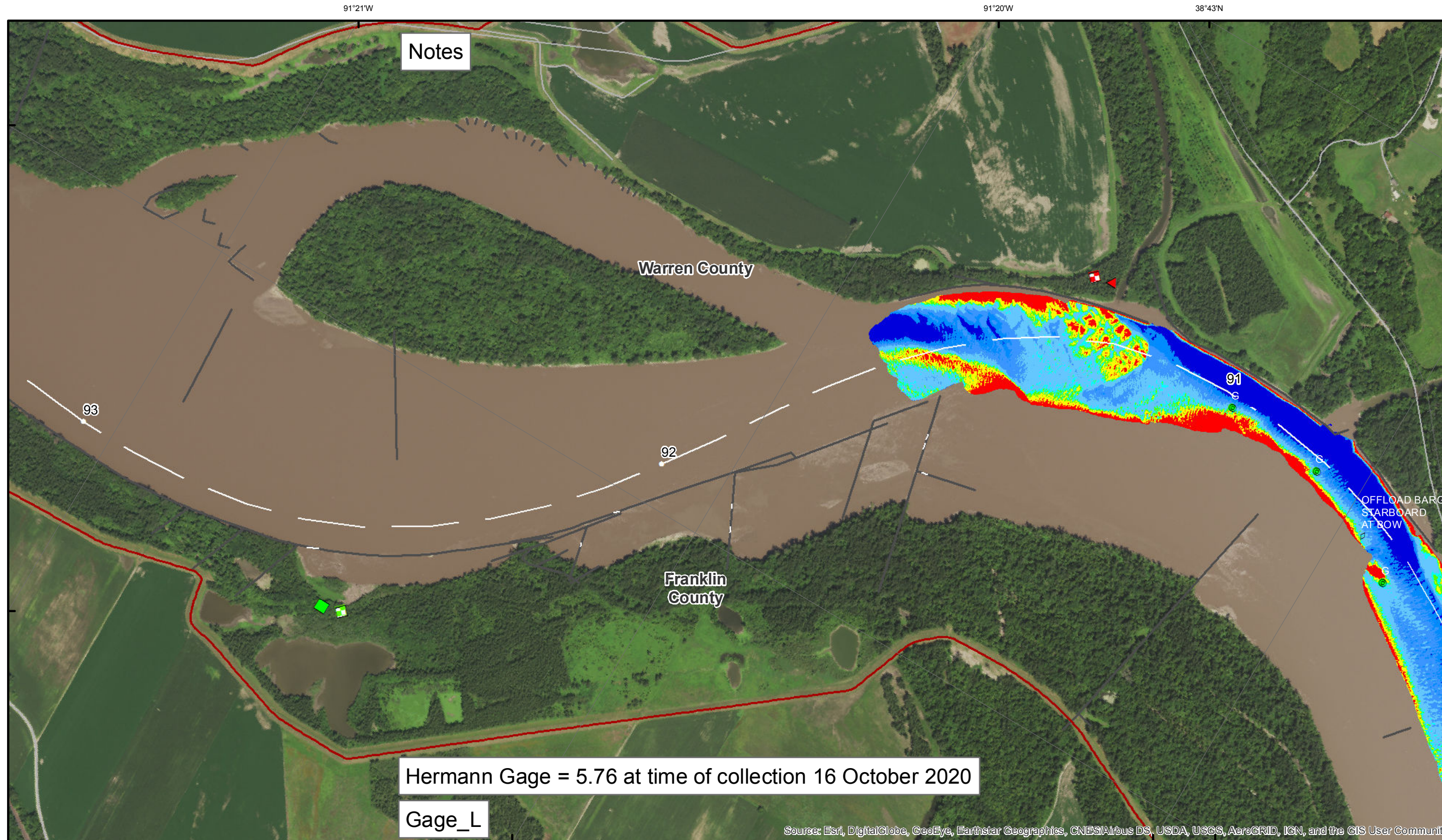
LEGEND

			Green Passing		Green		Green CAN
			Red Passing		Red		Red NUN
			Green Crossing		Red		
			Red Crossing		Junction		

Scale: 0 312.5 625 937.5 1,250 2,500 Feet

NOTES:
 Horizontal Coordinate System: World Geodetic System of 1984 (WGS84), projected to the Universal Transverse Mercator (UTM) Zone 15 North. Distance units in U.S. Survey Feet.
 Vertical Datum: Soundings are shown in feet and indicated depths are referenced to water surface at time of collection.
 The information depicted on this map represents the results of a survey conducted on the date indicated and can only be considered to represent the general condition existing at that time.
 The location of navigation aids are based on and provided by the U.S. Coast Guard.

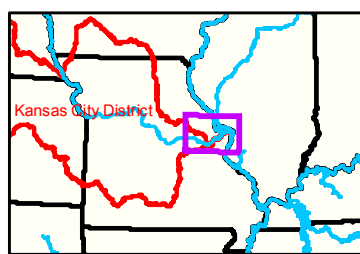
Sheet Number
 41 of 46



DISCLAIMER: The U.S. Army Corps of Engineers (USACE) provides this information as a service to the public. It is not intended to be used for any purpose other than that for which it was prepared. The USACE makes no warranty, express or implied, regarding the accuracy, reliability, or completeness of the information. The user assumes all liability for any use of this information. The USACE is not responsible for any errors or omissions in this information. The USACE is not responsible for any damage or loss resulting from the use of this information. The USACE is not responsible for any delay in the delivery of this information. The USACE is not responsible for any loss of data or information. The USACE is not responsible for any loss of time or money. The USACE is not responsible for any loss of life or property. The USACE is not responsible for any loss of reputation. The USACE is not responsible for any loss of honor. The USACE is not responsible for any loss of dignity. The USACE is not responsible for any loss of respect. The USACE is not responsible for any loss of esteem. The USACE is not responsible for any loss of honor. The USACE is not responsible for any loss of dignity. The USACE is not responsible for any loss of respect. The USACE is not responsible for any loss of esteem.

KANSAS CITY DISTRICT MISSOURI RIVER AREA OFFICE	
Surveyed By:	MIRAO
Reviewed By:	MIRAO
Checked By:	MIRAO

Survey Information
 MO_01_LMR
 MO_01_LMRX_20201016_CS_90_5_92_0_SORT
 16 October 2020



91°20'W 91°19'W 38°41'N

LEGEND

< 8	< 8 ft	Green Passing	Green	Green CAN
8 - 9	8 - 9 ft	Red Passing	Red	Red NUN
9 - 9.5	9 - 10 ft	Green Crossing	Junction	
9.5 - 10	10 - 12 ft	Red Crossing		
10 - 12	River Mile			
12 - 14	Sailing Line			
14 - 16	BSNP Structure			
> 16	Levee			

Feet
0 312.5 625 937.5 1,250 2,500

NOTES:
 Horizontal Coordinate System:
 World Geodetic System of 1984 (WGS84), projected to the Universal Transverse Mercator (UTM) Zone 15 North. Distance units in U.S. Survey Feet.
 Vertical Datum:
 Soundings are shown in feet and indicated depths are referenced to water surface at time of collection.
 The information depicted on this map represents the results of a survey conducted on the date indicated and can only be considered to represent the general condition existing at that time.
 The location of navigation aids are based on and provided by the U.S. Coast Guard.

Sheet Number
42 of 46